

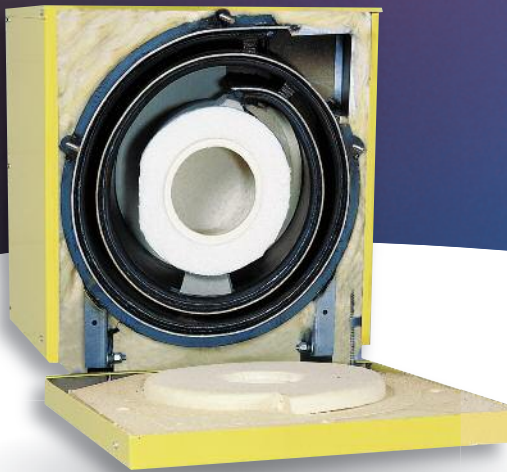
# EK1 and EK2

(FRONTIER®)

PRODUCT DATA SHEET

**Propane and  
natural gas!**

## Energy Kinetics' hybrid propane and natural gas systems for every home!



Swing down door for  
easy service and cleaning!

Our patented spiral boiler  
*precisely* controls the flow  
of water and flue gases  
for the best heat transfer.

**Plus!** There are no pins, baffles  
or micro passages to foul and  
reduce efficiency over time.

EK1 and EK2 are part of the System 2000  
family of products manufactured  
by Energy Kinetics.



Shown with optional silent  
burner cover and base.

- Exceptionally clean burning
- Light weight
- Highest efficiency
- **Cuts up to 40% off fuel!**
- More quiet than a microwave!
  - Multiple zone control
- **Stackable model available**



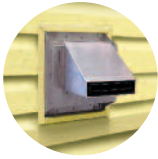
Call us today for **800-661-0902**  
more information [www.system2000.com](http://www.system2000.com)



Accepted For Use City of New York  
Department of Buildings MEA 140-03-E

**System 2000 is an integrated system – makes both heat and hot water!**

**Homeowners enjoy economical heat, plus virtually endless hot showers with lower energy costs. Plus, System 2000 delivers significant savings over electric or traditional hot water making methods, with whisper quiet operation!**



No chimney is needed! Ground level venting stays relatively cool!

**POWER VENTING** Homeowners who plan to save money by converting from expensive electric heat to gas heat often find themselves up against a brick wall: *the high cost of chimney construction.*

But System 2000's unique combustion chamber, combined with a 10 foot long flue passage, mean gases leave System 2000 *clean, and relatively cool.* Gases can be vented *directly through-the-wall.* No chimney is needed! An excellent benefit for homeowners converting from electric heat, heat pumps or for new home construction. Power venting is the safest method of side wall venting and is a low cost alternative to chimney construction.



Easy service compact natural gas or propane EK1 Frontier, with 40 gallon low boy tank and stand. Shown with optional silent burner cover and base.

# EK1 EK2 (FRONTIER)

Natural Gas / Propane heating system

System 2000 Natural Gas/Propane performance:  
Lifetime limited warranty/option to transfer.  
Energy recovery standard on all systems.

FEATURES	BENEFITS
10 feet forced counter flow passages	Maximum heat recovery
300° net stack temperature	Up to 88% efficiency
Water content: EK1= 2½ gal., EK2= 4 gal.	Rapid heat up, cool down
Wet base design	Minimizes heat losses
High temperature combustion chamber	Incinerates fuel - clean, safe heat
Jacket/insulation: EK1= 90 lbs., EK2 = 110 lbs.	Minimizes heat losses
Buried combustion	Quiet operation
3/16" pressure vessel steel throughout	50% thicker than boiler tubes
ASME code construction and Nat'l Board of Pressure Vessels registered	Carefully inspected, pressure tested, and certified
All welded and threaded connections	No gaskets to leak or service
Built-in dynamic air elimination	Eliminates air from system, no "gurgles"
Front cover swings down	Easy service/access to components
Large open passages	Easy to clean and inspect
Standard burner and accessories	Serviceable with normal stock parts
Small size	Compact and stackable installations
Chimney venting	Ideal for retrofit installations
Power vent chimneyless option available	Save thousands on chimney construction

### EK1 FRONTIER SPECIFICATIONS:

Natural Gas or Propane Input, BTU/hr	EK1 FRONTIER Natural Gas		EK1 FRONTIER Propane	
	Gross output, BTU/hr	AFUE	Gross output, BTU/hr	AFUE
80,000	69,000	86%	70,000	88%
100,000	85,000	85%	88,000	88%
120,000	101,000	84%	105,000	87%
150,000	125,000	83%	129,000	86%

Energy Converter weight 270 lbs.

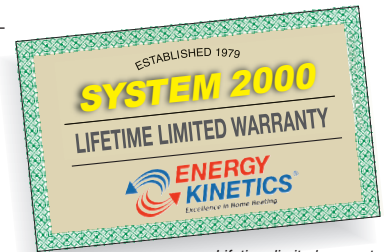
### EK2 FRONTIER SPECIFICATIONS:

Natural Gas or Propane Input, BTU/hr	EK2 FRONTIER Natural Gas		EK2 FRONTIER Propane	
	Gross output, BTU/hr	AFUE	Gross output, BTU/hr	AFUE
175,000	149,000	85%	153,000	87%
200,000	168,000	84%	172,000	87%
225,000	187,000	83%	192,000	85%
250,000	204,000	82%	209,000	84%

Energy Converter weight 350 lbs.



Accepted For Use  
City of New York  
Department of Buildings  
MEA 140-03-E



Lifetime limited warranty on Digital Energy Manager and ASME pressure vessels  
See actual warranty for details.



51 Molasses Hill Road  
Lebanon, New Jersey 08833  
T: 800 323 2066 • F: 800 735 2068  
visit: [www.energykinetics.com](http://www.energykinetics.com)

®The color yellow for heating boilers is a registered trademark of Energy Kinetics.